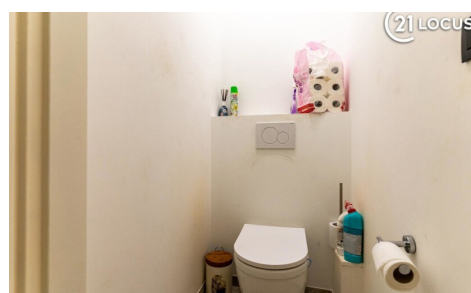
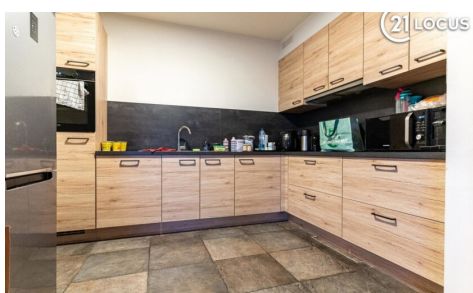
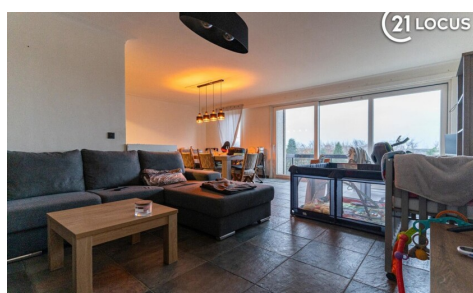


FOR RENT - FLAT

Baljuwstraat 17 B1, 9120 Beveren

€ 875

Ref. 7298576



Number of bedrooms: 2
Number of bathrooms: 1

Surf. Living: 112m²
Surf. Plot: 112m²
Surf. terrace: 8m²
Neighbourhood: central

PEB/EPB: 338kwh/m²/j

DESCRIPTION

Discover this cozy and light-filled apartment, perfectly located in Beveren. With 2 spacious bedrooms, it offers plenty of space for couples, small families, or a comfortable home office.

The spacious living room is the heart of the apartment and filled with natural light. From here, step out onto the 8 m² balcony, ideal for enjoying your morning coffee, reading a book, or watching the sunset in peace.

The modern, recently updated kitchen is fully equipped and ready for meal preparation. The interior has been freshly refreshed and carefully finished, giving the apartment a clean and inviting look.

The location is ideal: quiet yet central, with shops, public transport, and Beveren’s center within walking distance. The practical layout and bright rooms make the apartment feel spacious and comfortable—a true place to call home.

This apartment is the perfect combination of comfort, style, and central location. Don’t wait—schedule a viewing today and find your new home!

FINANCIAL

Price: € 875,00 per month
Available date: 01 March 2026
Costs: € 85,00/month

BUILDING

Habitable surface: 112,00 m²
Fronts: 2
Construction year: 1988
State: Very good state
Number of floors: 6

COMFORT

Handicap friendly: No
Elevator: Yes

SECURITY

Access control: Yes

ENERGY

EPC score: 338
EPC code: 20251230-0000230758-RES-2
EPC class: D
Double glazing: Thermic and acoustic isol.
Windows: Aluminium or pvc

LOCATION

Environment: Central, city
School nearby: 200m
Shops nearby: 100m
Public transport nearby: 100m
Highway nearby: 3.000m
Train station nearby: 250m

TERRAIN

Ground area: 112,00 m²

LAYOUT

Living room: 46,00 m²
Kitchen: 10,00 m², hyper equipped
Nighthall: 8,00 m²
Bedroom 1: 16,00 m²
Bedroom 2: 10,00 m²
Bathroom 1: 7,00 m²
Terrace: 8,00 m²

TECHNICS

Electricity: Yes
Water: Yes

PLANNING

G-score: B
P-score: B