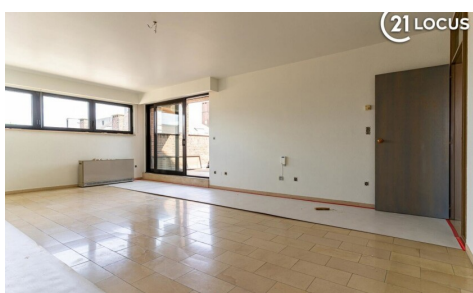


FOR RENT - FLAT

€ 880

Onze-Lieve-Vrouwplein 16 B5, 9150 Kruibeke

Ref. 7000373



Number of bedrooms: 2

Number of bathrooms: 2

Availability: immediately

Surf. Living: 103m²

Surf. Plot: 103m²

Surf. terrace: 10m²

Neighbourhood: central

PEB/EPB: 344kwh/m²/j

DESCRIPTION

Discover this exceptionally spacious and perfectly located apartment in the centre of Kruibeke, on the third floor (lift available) of O.L. Vrouwplein 16, box 5. Ideal for those seeking comfort with a strong emphasis on layout and light.

Layout & living comfort

Entrance hall (8.5 m²) with large coat closet and stylish mirrored doors

Bright living room (34 m²) with a south-facing terrace (8 m²) – a sunny spot for breakfast or relaxing

Fully equipped kitchen (7 m²) with ceramic hob, convection oven, extractor hood, fridge-freezer combo, dishwasher, and double sink

Bedroom 1 (21 m²) – generous and quiet

Bedroom 2 (12 m²) – ideal as an office, children's room, or guest room

Bathroom 1 (12 m²) with bathtub, sink, toilet, bidet, and washer & dryer connections

Bathroom 2 (4 m²) with shower, toilet, and sink

Storage room (3 m²) – extra space for household items

Additional perks

Bike storage – safe and practical

Lift available – comfortable living, even with heavy groceries

Perfect central location: within walking distance of shops, cafés, schools, and public transport

Why choose this apartment?

With a living area of approx. 103 m², two full bathrooms, and a southeast-facing terrace, this apartment is a rare gem in the centre.

Interested?

Contact us for more information or to schedule a viewing.

FINANCIAL

Price: € 880,00 per month

Available: Immediately

Costs: € 50,00/month

BUILDING

Habitable surface: 103,00 m²

Fronts: 3

Construction year: 1985

State: Good state

Floor: 3

Number of floors: 4

Orientation facade: South-east

COMFORT

Furnished: No

Handicap friendly: No

Elevator: Yes

LOCATION

Environment: Central

School nearby: 200m

Shops nearby: 100m

Public transport nearby: 100m

Highway nearby: 1.500m

Train station nearby: 2.500m

Sport center nearby: 500m

TERRAIN

Ground area: 103,00 m²

Orientation terrace 1: South-east

LAYOUT

Living room: 34,00 m²

Kitchen: 7,00 m², fully fitted

Bedroom 1: 21,00 m²

Bedroom 2: 12,00 m²

Bathroom 1: 12,00 m²

Bathroom 2 : 4,00 m²

ENERGY

EPC score: 344

EPC code: 0001881588

EPC class: D

Electricity certificate: Yes, conform

Terrace: 10,00 m²

TECHNICS

Electricity: Yes

Phone cables: Yes

Cable TV: Yes

Water: Yes

PLANNING

G-score: A

P-score: A